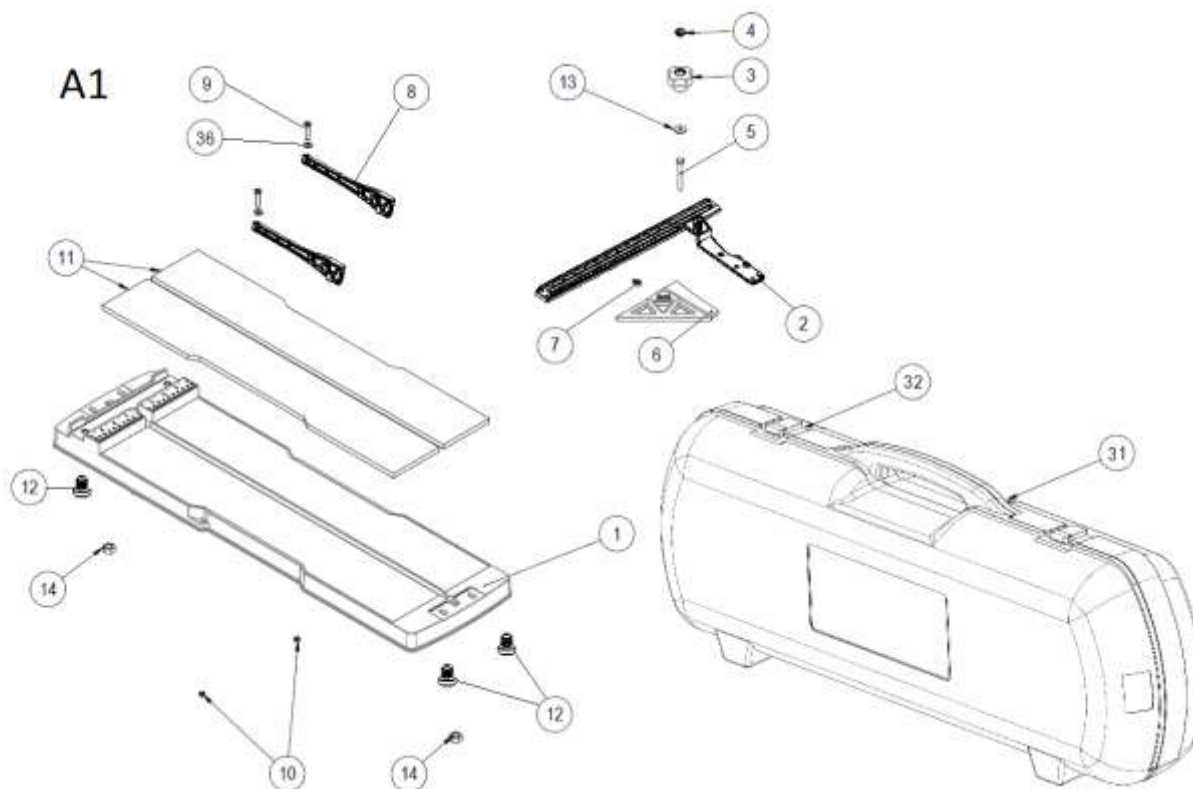


Part-list	ES	EN	Prod.	
1	1	GRUPO BASE SPEED-62/72/92	BASE GROUP SPEED-62/72/92	14975, 76, 77, 85, 86, 87
2	1	GRUPO BASE SPEED-42	BASE GROUP SPEED-42	14949
3	1	GRUPO GUIAS Y SOPORTES	GUIDE AND SUPPORT GROUP	
4	1	GRUPO PORTHERRAMIENTAS Y SEPARADOR	TOOLHOLDER AND BREAKER GROUP	

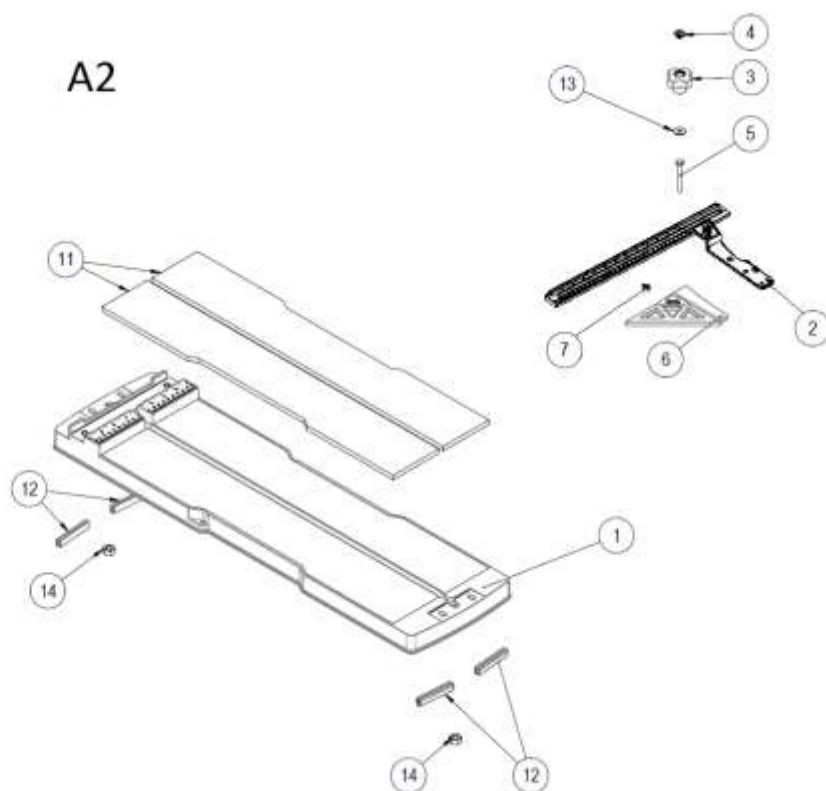
Prod.	ES	EN	From serial num.
14949	SPEED-42 N -CORTADOR MANUAL	SPEED-42 N	SN083207
14975	SPEED-62 N - CORT.MANUAL	SPEED-62 N	SN083207
14976	SPEED-72 N - CORT.MANUAL	SPEED-72 N	SN083207
14977	SPEED-92 N - CORT.MANUAL	SPEED-92 N	SN083207
14985	SPEED-62 N CON MALETA - CORT.MANUAL	SPEED-62 N WITH CASE	SN083207
14986	SPEED-72 N CON MALETA - CORT.MANUAL	SPEED-72 N WITH CASE	SN083207
14987	SPEED-92 N CON MALETA - CORT.MANUAL	SPEED-92 N WITH CASE	SN083207

Queda reservado el derecho de introducir cualquier modificacion técnica sin previo aviso

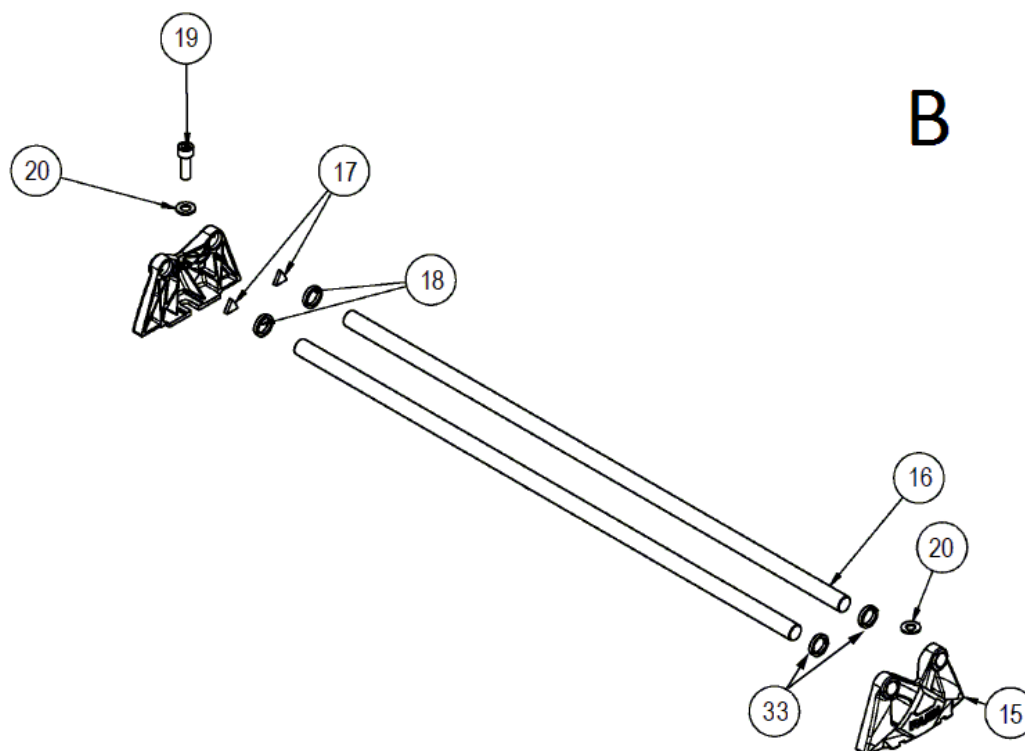
We reserve the right to introduce any technical modification without previous notice



Part-list	ES	EN	Prod.
1 13445 1	BASE SPEED-72 ARENADA V3	SANDY BASE SPEED-72 V3	14976, 14986
1 13446 1	BASE SPEED-92 ARENADA V4	SANDY BASE SPEED-92 V4	14977, 14987
1 13438 1	BASE SPEED-62 ARENADA V3	SANDY BASE SPEED-62 V3	14975, 14985
2 13473 1	TOPE LATERAL SPEED V3	LATERAL STOP SPEED V3	
3 13255 1	POMO M6 ESTANDAR ROJO V2	RED STANDARD M6 KNOB V2	
4 57485 1	TAPON POMO M6 ROJO	RED COVER KNOB M6	
5 56370 1	TORN DIN 933 M6X50 ZN	SCREW DIN 933 M6X50 SS A2	
6 13436 1	SUPLEMENTO 45° V2	45° SUPPLEMENT V2	
7 15132 1	TUERCA DIN 934 M6 CL8 ZN	HEX NUT DIN 934 M6 CL8 ZP	
8 13171 2	PATA DE APOYO SPEED-62	SUPPORT ARM SPEED-62	14975, 14985
8 13443 2	PATA DE APOYO SPEED-72/92 V2 NEUTRO	LATERAL ARM SPEED-72/92 V2 WO/LOGO	14976, 14986
8 13443 2	PATA DE APOYO SPEED-72/92 V2 NEUTRO	LATERAL ARM SPEED-72/92 V2 WO/LOGO	14977, 14987
9 70311 2	TORN DIN 7985 M5X25 6.8 ZN	SCREW DIN 7985 M5X25 6.8 ZP	
10 40045 2	TUERCA DIN 985 M5 CL8 ZN AUTOBLOC	HEX LOCK NUT DIN 985 M5 CL8 ZP	
11 13713 1	CJ.GOMAS BASE SPEED-72 V2	RUBBER SET SPEED-72 V2	14976, 14986
11 13442 1	CJ.GOMAS MIXTAS SPEED-62 DER.Y IZQ.V2	MIXED RUBBER SPEED-62 V2 ASSEMBLY	14975, 14985
11 13708 1	CJ.GOMAS BASE SPEED-92 V2	RUBBER SET SPEED-92 V2	14977, 14987
12 17718 4	CONTERA GOMA ESF.Ø 15X17	RUBBER BUMPER Ø15X17	
13 45038 1	ARAND DIN 9021 A6,4 ZN	WASHER DIN 9021 A6,4 ZP	
14 50150 2	TUERCA DIN 934 M10 CL8 ZN	HEX NUT DIN 934 M10 CL8 ZP	
31 14758 1	CJ.MALETA SPEED-62 N	CASE SET SPEED-62 N	14985
31 14760 1	CJ.MALETA SPEED-92 N	CASE SET SPEED-92 N	14987
31 14759 1	CJ.MALETA SPEED-72 N	CASE SET SPEED-72 N	14986
32 15760 2	CIERRE MALETA 54X54 TS30/40,TM,TX,SPD	PLASTIC LATCH - 54X54 TS30/40,TM,TX,	14985, 14986
32 15761 2	CIERRE MALETA 89X54 TS50/60,TR,TM,TX	PLASTIC LATCH 89X54 (TS50/60,TR,TM,TX)	14987
36 56035 2	ARAND DIN 125 A5,3 ZN	WASHER DIN125 A5,3 ZP	

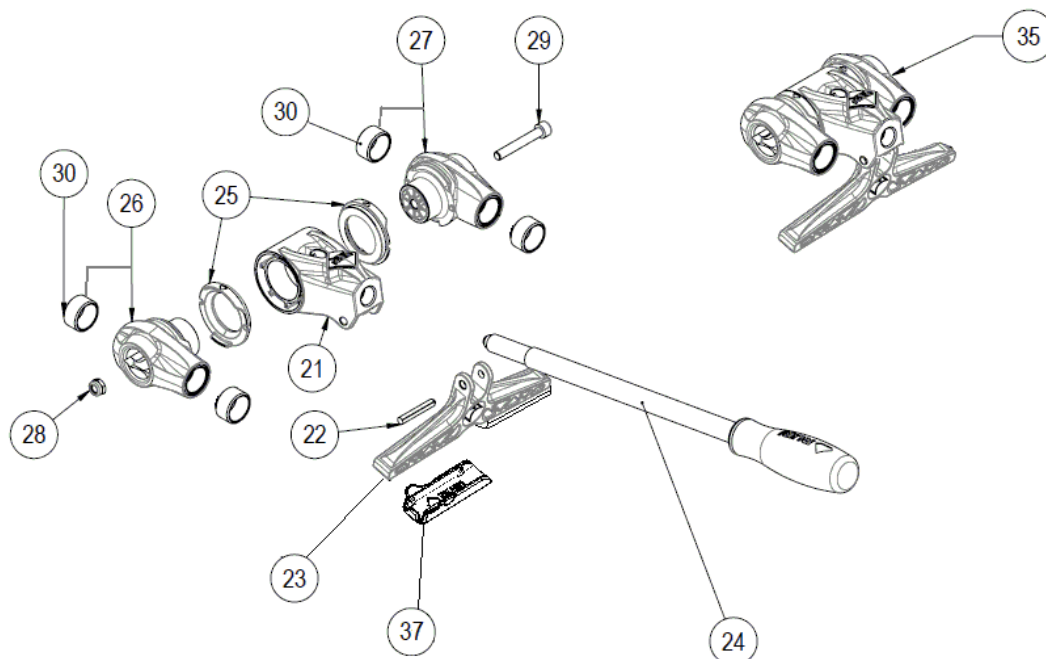


Part-list	ES	EN	Prod.
1 14213 1	BASE SPEED-42 ARENADA V2	SANDY BASE SPEED-42 V2	
2 13473 1	TOPE LATERAL SPEED V3	LATERAL STOP SPEED V3	
3 13255 1	POMO M6 ESTANDAR ROJO V2	RED STANDARD M6 KNOB V2	
4 57485 1	TAPON POMO M6 ROJO	RED COVER KNOB M6	
5 56370 1	TORN DIN 933 M6X50 ZN	SCREW DIN 933 M6X50 SS A2	
6 13436 1	SUPLEMENTO 45° V2	45° SUPPLEMENT V2	
7 15132 1	TUERCA DIN 934 M6 CL8 ZN	HEX NUT DIN 934 M6 CL8 ZP	
11 14214 2	GOMA MIXTA SPEED-42 V2	MIXED RUBBER SPEED-42 V2	
12 13231 4	GOMA BASE SPEED-42/62	BASE RUBBER SPEED-42	
13 45038 1	ARAND DIN 9021 A6,4 ZN	WASHER DIN 9021 A6,4 ZP	
14 50150 2	TUERCA DIN 934 M10 CL8 ZN	HEX NUT DIN 934 M10 CL8 ZP	



Part-list	ES	EN	Prod.
15	14077 2	SOPORTE GUIAS SPEED-62 N	GUIDE SUPPORT SPEED-62 N
16	14078 2	GUIA Ø 18 L=727 CROMADA	CHROMED GUIDE Ø 18 L=727
16	14024 2	GUIA Ø 18 L=827 CROMADA	CHROMED GUIDE Ø 18 L=827
16	14025 2	GUIA Ø 18 L=1027 CROMADA	CHROMED GUIDE Ø 18 L=1027
16	14207 2	GUIA Ø 18 L= 544,5 CROMADA	CHROMED GUIDE Ø 18 L= 544,5
17	12693 2	TACO GOMA FAST	RUBBER STOPPER FAST
18	13091 2	TOPE CORREDERA Ø18X22X4	CARRIER TOP 18X22X4
19	13175 2	TORN DIN 912 M10X30 8.8 ZN	SCREW DIN 912 M10X30 8.8 ZP
20	56017 2	ARAND DIN 125 A10,5 ZN	WASHER DIN 125 A10,5 ZP
33	14445 2	TOPE CORREDERA Ø18X22X22	CARRIER TOP 18X22X22

C



Part-list	ES	EN	Prod.
21 12624 1	PORTAHERRAM.STAR MAX	TOOLHOLDER STAR MAX	
22 12628 1	PASADOR DIN 1473 5X32	BREAKER SHAFT DIN 1473 5X32	
23 14629 1	PISADOR SPEED-62 N V2	SPEED-62 N BREAKING FEET V2	
24 12845 1	COM.MANGO FAST-85	HANDLE SET FAST-85	
25 14005 2	DISTANCIADOR SPEED N POM	SPEED N SPACER POM	
26 14429 1	CJ.CORREDERA ENCASQ.SPEED-62 N IZQ.	LEFT SLIDER W/BUSHING SPEED-62 N	
27 14431 1	CJ.CORREDERA ENCASQ.SPEED-62 N DER.	RIGHT SLIDER W/BUSHING SPEED-62 N	
28 40020 1	TUERCA DIN 985 M6 CL8 ZN AUTOBLOC	HEX LOCK NUT DIN 985 M6 CL8 ZP	
29 13092 1	TORN DIN 912 M6X40 6.8 ZN	SCREW DIN 912 M6X40 6.8 ZP	
30 14083 4	CASQ 18X22X12 SINTER.	BUSHING 18X22X12	
35 14824 1	CJ.PORTAHERRAM.SPEED-N	TOOLHOLDER SET SPEED-N	
37 14683 2	PROTECTOR CERAMICA REF:14629-14628 V2	TILE PROTECTOR SPEED-N/MAGNET V2	